



God and Goddess Connections



Phyllis Brown

Conscious Living Mentor, Author and Teacher

Elohim

Elohim is usually singular, 'god' or especially *the* God. When used with plural verbs and adjectives, *Elohim* is usually plural, 'gods' or 'powers'. It is usually translated as 'God' in the Hebrew Bible, referring with singular verbs both to the one God of Israel, and in a few examples to other singular pagan deities. There is also a school of thought that Elohim are the 'spark of God', pure light or essence that supports God in his work here upon Earth. The task of the Elohim was to help in the development of human kind and as such they are also recognised as Creator Gods. They are not of the human kingdom but here to create the human kingdom.

In this run of classes, we are going to look at the Elohim and the God essence or power they each represent. They are familiar names and each has been worshiped in past cultures for the strength they have given to humanity. There are seven cosmic planes and 7 Elohim who are connected to seven pairs of Gods and Goddesses:

1. Hercules and Amazonia.
2. Apollo and Lumina.
3. Heros and Amora.
4. Purity and Astrea.
5. Cyclopia and Virginia.
6. Peace and Aloha.
7. Arcturus and Victoria.
8. Seven Great Beings/Great Bear.
9. Logos of Sirius.
10. Solar Logos Helios.
11. Vywamus.

Elohim – Hercules and Amazonia on the First Cosmic Plane – the Physical Plane. Theta calls this plane the “gathering of non-organic material”. This includes all elements that make up this Earth. As the physical plane, we are guided to the body and all that it represents. Hercules and Amazonia were prime human specimens, both with physical prowess and the ideal human strength. They were worshipped for that ideal in the hope that those who looked upon them could harvest their strength into their own life. Offerings would be made to them; statues and likeness made and painted to bring in the physical energy of these two gods so that the town or village would be protected and safe from harm.

Spiritual Retreat of the Elohim of the First Ray

The retreat of Elohim Hercules and Amazonia is located in the etheric plane in and over Half Dome. On the west side of California's Sierra Nevada mountain range, this magnificent focus rises nearly a mile from the floor of Yosemite Valley. The etheric retreat is superimposed within the rock. At this retreat, Hercules and Amazonia focus the energies of the will of God in this sacred power centre – the throat chakra of the planet.

Description of Hercules and Amazonia's Retreat

We enter through a large portal graced by two immense white pillars. The entrance hall is shaped as an octagon, each side leading to another room. We are immediately impressed by the fact that this is a busy retreat – blue-flame angels ten feet high, mighty seraphim, cherubim, angel devas, as well as those ministering to all the seven rays are coming and going, each intent on rendering a specific service for the Brotherhood. This octagon room glows with the intense love of the Elohim and the angels for the will of God. A bright blue permeated the atmosphere and is both inviting and invigorating to those who are privileged to enter here.

Etheric Flames Anchored in Physical Gem Stones

Crossing this hall, we descend a flight of stairs to a circular room. In the centre is the focus of a large blue-white diamond with the flame of Hercules and Amazonia blazing through it. In every retreat of the Great White Brotherhood, there is a focus of a flame, and usually the flame is anchored physically in some form of jewel. The jewel of the first ray and the first-ray masters is the diamond. The will of God coalesces as the hardness of the diamond because it is unflinching devotion to the inner pattern; the fiery core of each man's identity. The diamond also symbolises the crystal clarity of the soul and the precipitation of the Christ.

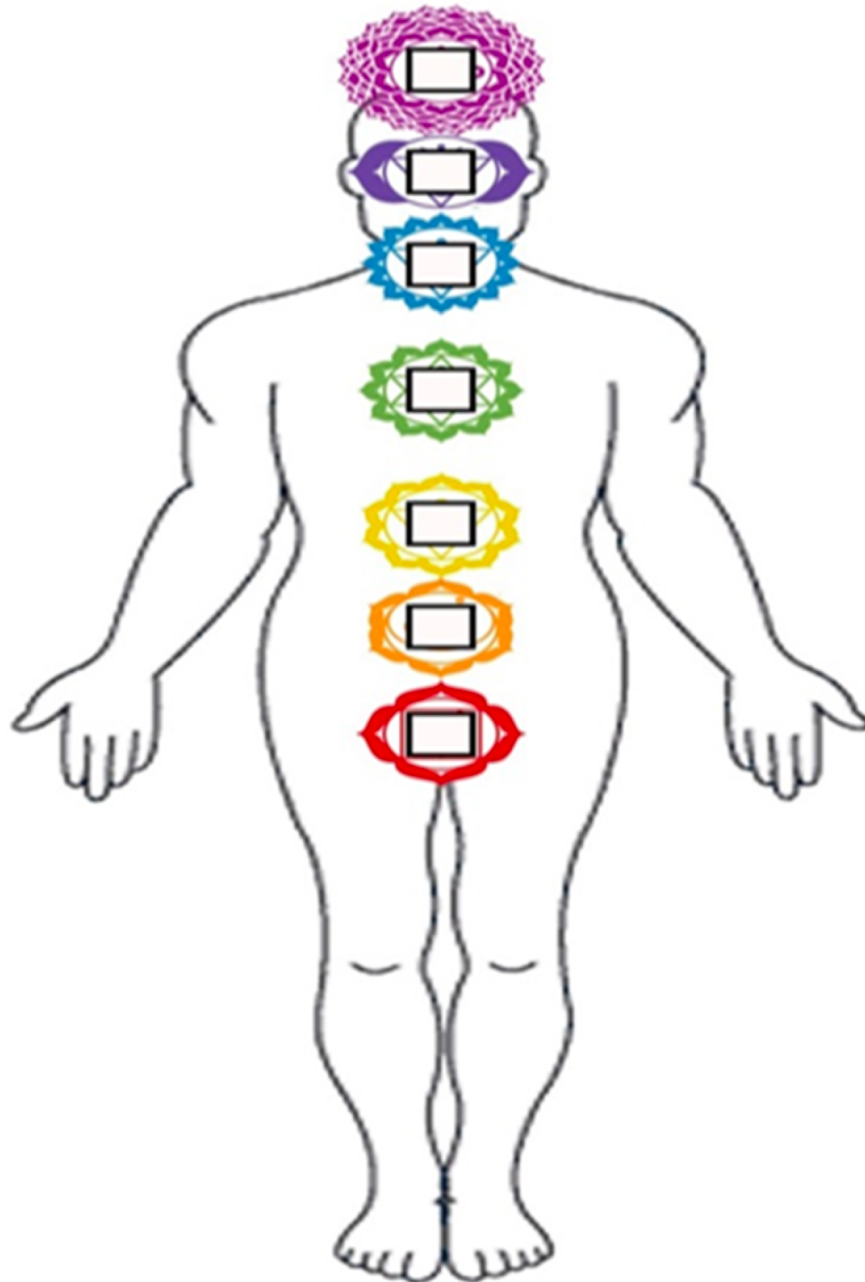
A circular stairway ascends around the periphery of this room to another round council chamber on the floor above. This room is built on a series of circular platforms, and at one side are the thrones of Hercules and Amazonia. These are accommodations for several hundred guests – members of the Great White Brotherhood – who often meet with the Elohim to discuss ways and means of implementing the power of the will of God in the world of form. Behind the thrones of Hercules and Amazonia is a passageway leading to another room. Those who attend council meetings pass through other doors to the right and to the left of the thrones into another circular chamber that contains the main focus of the flame of the will of God.

Training in Hercules' Retreat

As you meditate on the will of God, you can allow your consciousness to move to this retreat because you have knowledge of its existence and an awareness of this octagonal force field. In your decrees to Hercules and your invocations, you can fill your aura and the sphere of light around the heart with the energies of the retreat of Hercules and Amazonia.

Exercise – Physical Body Scan and Healing

- Sit opposite your partner and scan the body and auric field, you can invoke the energy of Hercules and Amazonia to help with the scan.
- Draw on the body image any areas that need healing and then give a healing with the help of Hercules and Amazonia and the blue/white angels.
- Look at the body again once the healing is over and give feedback.



Apollo and Lumina – Second Plane of Existence



Apollo was the son of Zeus and Leto, twin brother of Artemis. He was the god of music, and he is often depicted playing a golden lyre. He was also known as the Archer, for shooting with a silver bow; the god of healing, giving the science of medicine to man; the god of light; and the god of truth. One of Apollo's most important daily tasks was to harness his four-horse chariot in order to move the Sun across the sky.

Apollo was an oracular god, as he was the prophetic deity in the Oracle Delphi. People from all over the known world travelled there to learn what the future held for them, through his priestess Pythia. The god was also worshipped in

the island of Delos, which was initially dedicated to his twin sister Artemis. In relation to the rituals and practices that took place in Delos and Delphi, it could be said that there were two completely distinct cults in honour of Apollo. As already mentioned, Apollo was considered as the god of healing and medicine, either through himself or through his son, Asclepius. At the same time, he could also bring forth disease and plague with his arrows; it was considered that a god that can cause disease is also able to prevent it.

He was born on Delos, where his mother, Leto, sought refuge; Hera, having realised that Leto was impregnated by her husband Zeus, banned Leto from giving birth on land. So,

Second Plane of Existence

This plane is the plane of all organic matter upon the earth, including plants, vitamins, and minerals, elements of elemental energy. At this level of existence we have a mutual need for each other in that plants need us for propagation, and we need plants as an energy source. The earth supplies all that we need by way of sustenance, and we do at the time know what the body craves when it is lacking in vitamins and minerals.

In order for us to be in balance with the second plane, we need to heed what the body is saying and feed it from the natural source. When we can connect to the second plane, we are in harmony with all that surrounds us and keeps us in tune with nature, nature spirits, earth angels and ancient wisdoms. We can develop a sense of harmony within our surroundings, even if it is just a pot plant within our home.

Exercise

Connection to the second plane of existence through plants and crystals:

- Tune into the plant or crystal and ask what its purpose is in life.
- Ask its connection to Apollo and Lumina.
- What are the healing qualities of that plant or crystal?

Working in pairs, ask for the energy of the plant or crystal to heal any blocks within the body to bring it back into balance with nature.

Meditation

Join Apollo and Lumina at the temple at Delphie. Bask in the blue and yellow flame to truly connect to the wisdom of the second plane of existence.

- While in that space, ask how the second plane can help you in this lifetime.
- Receive the healing to bring the body back into balance.
- Open a sixth sense to the second plane in your daily life.



Elohim Apollo and Lumina's Etheric Retreat

The spiritual retreat of the Elohim Apollo and Lumina is located in the etheric plane over Lower Saxony, Germany. Here, the Elohim of the second ray focus the energies of the Crown Chakra of the planet. On the outside of the building are three pillars in the formation of a triangle. These pillars are electrodes focusing a yellow star at the top of each one. There are three stories in the round dome of the etheric retreat, built in a parabolic curve. The first floor is the largest; the second and third are progressively smaller. A spherical focus of the flames of Apollo and Lumina is in the centre of each of these three levels.

In the centre of the first floor is a golden-yellow ball resembling a whirling galaxy, its component start clusters whirling at such a high frequency that they appear to be at perfect rest. In the centre of the second floor is an identical sphere of brilliant sapphire blue. In the centre of the upper room is another golden sphere like the one on the first floor. On each floor, there is a spherical meditation room having as its focal point the spherical flame. Each of these rooms accommodates approximately one thousand angels serving under Apollo and Lumina. Their glorious yellow-golden auras and robes make those who behold them feel as if they are in the centre of the Great Hub. Classrooms, laboratories, libraries and archives form a radial pattern out from the centre of the meditation room on each of the three floors. At the first level, there is a circular hallway following the circumference of the building. On either side of the hall are three-dimensional exhibits showing the operation of the law of cycles throughout the Earth. There are several thousand such displays atop square pillars about four feet high.

Elohim of Wisdom Created the Planet's Cycles

When the Elohim responded to the great command to go forth and create the Earth, they did so through the initiation of cycles. The many cycles that are the components of our world actually make up its individuality. The cycles of earth, air, fire and water, of the mineral and plant kingdoms, of time and space – all are illustrated. These cycles are based on the law of the twelve illustrated in the twelve bands of the causal body and the twelve signs of the zodiac, also known as the twelve hierarchies of the sun. Also illustrated are the cycles of cosmic beings and their releases of light to the planet, the cycles of civilisations, the cycles of photosynthesis and precipitation. The electronic force field within the square blocks allows these displays to be suspended in air and to have “live parts”, moving flames, spirals, showing the endless complexities of our world and making them simple through illustrations. One could easily spend a hundred years studying these displays and being tutored by the great cosmic scientists who serve in Apollo and Lumina's retreat.

Become an Electrode for Change

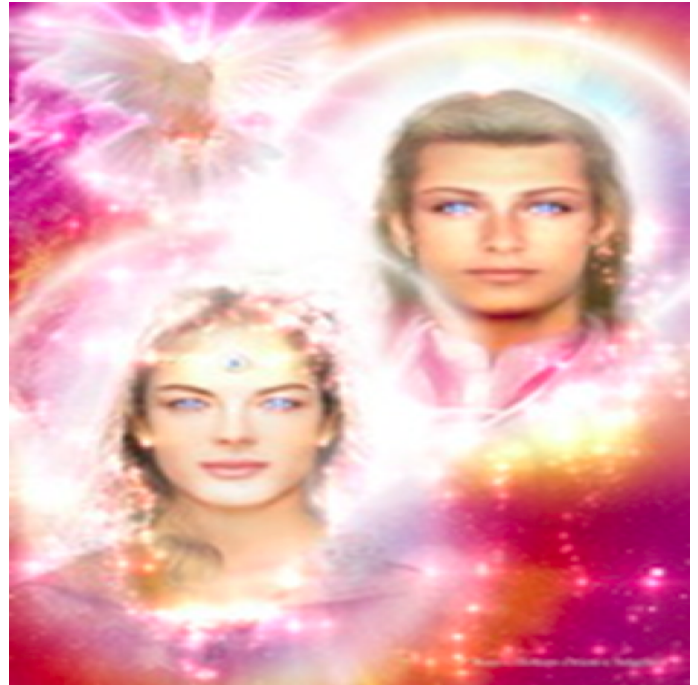
The angels of Apollo and Lumina, together with the angels serving at the spiritual retreats of Archangel Jophiel and Christine, Lord Lanto, the God and Goddess Meru, Lord Gautama Buddha, Lord Himalaya, Lord Maitreya and Jesus and Kuthumi, the World Teachers, should be called upon on behalf of the enlightenment of all mankind, for they are equal in every respect to the tremendous task at hand.

Apollo's Flame: Golden Yellow with a Blue Sheath

The action of the blue flame is a protective force field for the wisdom of the Christ. It proceeds the manifestation of wisdom in the world of form, cutting through the density of human error and mis-qualified energy, paving the way for the manifestation of the Christ mind. Lumina's flame is a golden-yellow, which follows the flame of Apollo in the manifestation of the seven aspects of the Christ mind.

Heros and Amora – Third Plane of Existence

Heros and Amora are the Elohim Masters of the third ray, representing divine love, cohesion, adoration, and gratitude to life. It is said they are the heart chakra of the world bathed in pure rose quartz crystal energy. Heros, also known as Orion, is said to bring in the night, and his divine companion, Amora, also known as Angelic, brings in the dawn of each day. Heros and Amora have the ability to help us on our soul journey to remove discordant elements and psychic debris from the many lifetimes we have endured. In other words, they are assisting us to bring the positive aspects of our timelines together to create Oneness within our consciousness.



As we progress on our soul path, we are always connected to the love aspect of who we are, but not always open to the love within our heart for themselves. With the help of Heros and Amora, we can reignite this flame of self-love and project this out in the greater world for all to see. As a human, being part of the animal kingdom is a way of reflecting and projecting pure love. Animals know only pure light within their soul. They act upon pure instinct and, even when taking a life for food, they can show great care and tenderness. A human without love lives in a place of darkness and separate from what is open to them on a day-to-day basis. The third plane is a training ground for us to explore who we are. It is our duty to find love and express love in all that we do.

Third Plane of Existence

This plane is the plane of all Protein matter upon the Earth, including mastering the body and all that is created within or upon the world. This level of existence is where animal and human exist. We are creatures that exist by consuming plant and other animal life forms in co-existence for survival. This plane is the school for our emotions, desires, passions, and being human. In mastering the physical, we can ascend to the higher spiritual realms where we are no longer bogged down with dogma. This plane is the plane of imagination, problem solving, and instinctual behaviours. We connect to our past life memory and this life's memory for healing and spiritual growth. This plane is what you create; "you're living the reality you create" on a daily basis. Through spiritual growth we can grow from our experiences and then move onto the higher planes of existence for our daily support.

Although animals reside on the third plane, they live through the spiritual fifth plane while on this Earth. Animals are here to show us how to live free from dogma and how to live in the moment.

Exercise

Working in pairs, use the crystals first to heal and clear the heart space. Remember to ask Heros and Amora to step forward. Once this is done, ask for the energy of the animal to reveal a message as to why they wish to work with your partner and the qualities it wishes to help heal.

Healing with the Crystals

- Connect to Heros and Amora.
- Using the citrine and rose quartz: remove negative energy with the citrine and heal with the rose.

Connection to the Third Plane of Existence Through the Animal Kingdom

- Chose an animal and tune into what it feels like to be that animal.
- Allow the energy of the animal to heal and imbue you with their qualities.

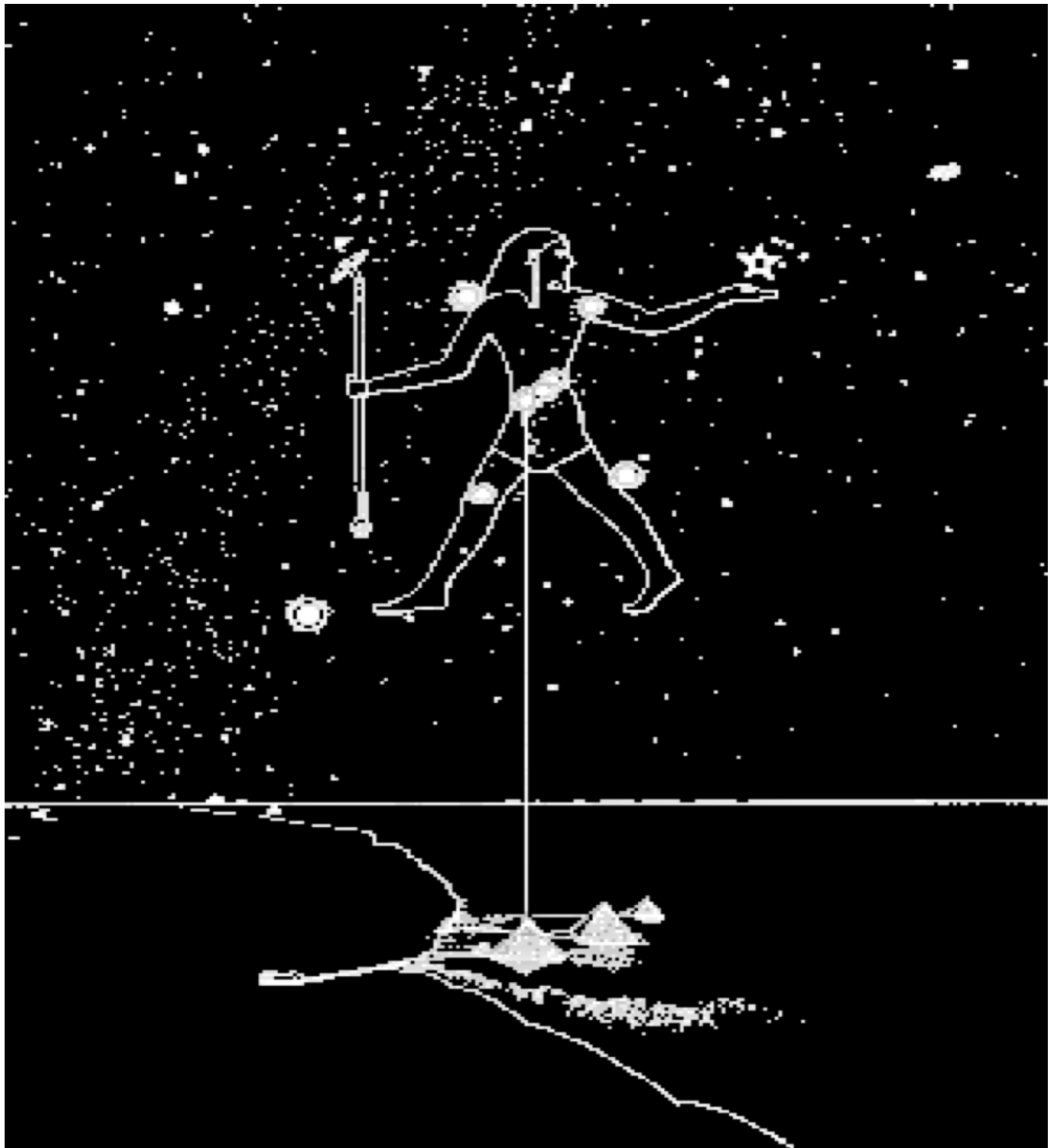
Meditation

Join Heros and Amora in the temple in Lake Winnipeg; bask in the Pink flame of unconditional love and united love between the Human and Animal kingdom.

- While in that space, ask how the third plane can help you see how to live in co-creation.
- Receive the healing to bring the body back into balance.
- Absorb the energy of your totem animal.



Constellation of Orion



Elohim Heros and Amora's Etheric Retreat

The Elohim of the third ray, Heros and Ammora, focus the energies of the Heart Chakra of the planet in their retreat located in the etheric plane over Lake Winnipeg, Manitoba, Canada. The force field of this temple and the temple itself are designed after the patterns of a budding lotus whose petals are not quite expanded. The temple is square, made of rose quartz, with giant petals rising at each corner, and a tall steeple at the entrance. From the tip of each petal to the centre of the sides of the temple extend two bands of a metallic-like substance that serve as conductors of light. There are three petal-shaped doors at the entrance of the retreat, which is in the tall spire in the centre of one of the four sides.

Inside Heros and Amora's Retreat

Going through the entrance down a central hallway, we approach the sunken altar of the love ray. Here, the pink plume of the love flame burns in the centre of the first floor. Three tiers descend into the floor from the bowl for the flame, which is surrounded by carved petals. Three other arteries proceed away from the altar to petal-shaped classrooms that are within the four squares into which the first floor is evenly divided. There are four levels in this retreat; the second and third floors consist of chambers used by the pink-flame angels who serve here and the masters who frequent this retreat. On the top floor is the throne of Elohim in a large round room, an audience chamber, having the appearance of a disk with beautiful carvings in the stone walls.

Art Conveying the Action of Divine Love

Throughout the retreat are sculptured art forms that convey the action of divine love to the universe, its cohesive power within the atom and in galaxies. Meditation upon these sculptures infuses the consciousness with the understanding of the laws of love and their operation at every level of consciousness, for they key into patterns within the atom and the cell of man where the laws of God are written in his inward parts. Therefore, upon seeing these sculptures, the individual ties into that which he already knows, and he becomes that knowledge through meditation.

Arc of Love: Elohim Retreat to Archangel Retreat

The radiance of the pink flame from the heart of Heros and Amora together with that of Archangel Chamuel and Charity forms an arc of love connecting the retreat over Lake Winnipeg with that of the archangel and archeia of the third ray over St. Louis, Missouri. This arc of love is for the union of the Western Hemisphere and the bringing in of the golden age. Canada and the United States of America are intended to work together in

absolute unity of purpose to defend the Western Hemisphere against all inroads of bondage and all manifestations of anti-love.

Hemispheric Threefold Flame Action

It is extremely significant to have a retreat of the Elohim of Love as a focus of divine love in the Western Hemisphere. This retreat guides the destiny of North and South America. Canada, the United States of America, and South and Central America are intended to form one cosmic action of the threefold flame: the wisdom of the heart of the United States, the great devotion and love of the people of South and Central America, and the unlimited resources of the power ray in Canada.

Purity and Astrea – Fourth Plane of Existence



Purity, also known as Astrea, is the Elohim Master of the fourth ray. She is the Goddess of Purity and Justice. Astrea is known as the 'Starry one' and is said to reside in the constellation of Virgo. As the bridge between worlds, the physical and astral, Astrea will protect you against the darker or negative forces that reside on the Astral planes. She will cut you free from attachments, psychic attack and psychic debris. She will use her powerful sword of blue/white light to free you, so you can connect to the astral worlds in perfect safety. On a global scale, Astrea is working to clear the mindset of domination in the human domain. When factions appear that wish to

quash personal space and free will, she will install hope into the hearts of those being oppressed so they can overcome the illusion of being mastered by negative forces. On your own personal journey, you can call upon Astrea to help you develop your own personal protections against negative aspects within your life. This can include past life trauma and cords still attached to old events within your life. She will create a direct link to the spirit world in pure love and light. Astrea will also clear a path for you as you enter rooms, external environments and your auric field. She can direct you to your guides for spiritual growth and development. The fourth plane is a training ground for us to explore the unseen world, as well as to develop our astral body and psychic abilities so we can communicate with spirits. Remember the golden rule; you have free will and as such you must call upon Astrea to come to you when you are in need of her protection at any time.

*"We love thy light forever true;
We love thy sword of brightest blue;
We are the fullness of the Christ;
Free from worry, fear and strife!"*

Fourth Plane of Existence

The fourth plane of existence is the realm of the spirit, where people exist after death and where our ancestors are waiting for us. This plane, although not solid, spirit can feel, see, hear, touch and taste through a combination of energy, vibration, frequency and light. It is in this plane we can limit our connection to what is available to us within the spirit world. We can become comfortable with this vibration and therefore restrict our own growth. In sticking with the fourth plane, we can be guided down the wrong path of spiritual growth by wayward spirits. Further, this plane is filled with memories which, if transferred to us, can reconnect us to past life trauma.

Examples

- Afraid of going into the light after death.
- I must suffer to learn.
- To be a healer I must take all of people's suffering.
- It is wrong to accept money in exchange for healing.

Our task is to move freely within every plane of existence so we can truly comprehend the connection between the worlds, receive true guidance, and experience our soul's evolution.

Exercise

Working in pairs, ask Purity/Astrea to clear all negative energy and cords of attachments for your partner. Flood the body with blue/white light to heal the body on a deep level and call your partner's guides to come forward with any guidance during the healing session.

Clearing the Aura from Psychic Debris

- Connect to Purity/Astrea.
- Energy healing with partner.

Connection to the Fourth Plane of Existence Through the Spirit World

- Once the healing has been done, ask your partner's guides to step forward with a message for your partner.

Meditation

Join Purity/Astrea in the Crystal Temple. Bask in the blue/white flame of justice and spiritual connection.

- While in that space, ask how the fourth plane can help you see how to live in co-creation.
- Receive the healing to bring the body back into balance.
- Receive a symbol from your spirit family.



Vista Cyclopia and Crystal Virginia – Fifth Plane of Existence

We have been honoured to receive the energies of the Elohim Masters. Cyclopia and Virginia represent the energies of the fifth ray which is the Science of God and Knowledge of the crystalline frequencies. Cyclopia (also called Vista) with his beloved Virginia (also known as Crystal) represents concentration, consecration, healing and music. They exhibit the force to allow our manifestations to be created by teaching us the ability to concentrate on the desired goal or element, and then consecrating it by the blessing of God. *“If there is not concentration, there is only mediocrity, and only the bare surface is scratched.”*



Consecration

To induct (a person) into a permanent office with a religious rite.

To make or declare sacred; especially.

To devote irrevocably to the worship of God by a solemn ceremony.

Cyclopia is keeper of the sun behind the dun, the sphere or all-seeing Eye. He is here to help us remove the veils of our own ego which can distort our vision and keep us in a place of ignorance. When we are truly seeing our own inner-self and listening to our guidance, we can achieve the life we wish to create. This can be achieved through focused manifestation. We can receive the many blessings open to us from the Gods above.

Fifth Plane of Existence

The fifth plane of existence is a duality within the spirit world. The fifth plane is divided into many levels and types of energy, ranging from lower negative vibration, to the high spiritual vibration of the Ascended Masters, the councils of twelve, and the Holy Father and Mother. Unlike the fourth plane which comprises only physical beings who have passed over, the fifth plane has a mix of souls who have been great teachers, Jesus and Buddha being a prime example of having mastered a physical and spiritual existence before death, as well as energetic souls who have never had a physical life. It is through their mastery of physical and spiritual that they reside on this higher plane of existence. However, Ego still resides here on the fifth plane; this can cause some confusion when

tapping into this level for spiritual guidance. Drama exists on this level. you may be prone to connecting to other people's drama, therefore resisting your own self-healing journey. Light workers trigger from this level and can often get caught up in competitive thoughts, low self-esteem and martyrdom.

Examples

- It is selfish to heal myself.
- I must die to get closer to God.
- I must prove myself.
- I must suffer to be a healer.

Our task when working at this level is to accept the guidance given and not allow our Ego to interfere with the healing process. We must check the source of our information and see the higher purpose or truth behind the guidance.

Exercise

At this level, we want to calibrate all our connections to planes one through five, as we are part of every plane, mineral, plant, animal and spirit. Working in pairs, ask Vista and Crystal to clear all blocks to having a complete and healing connection to the planes of existence from the first up to and including the fifth.

Calibrating the Body, Mind and Soul

- Connect to Vista and Crystal.
- Energy healing with partner.

Meditation

Join Vista and Crystal in the Crystalline grids to access the ascended masters and angelic realms.

- Receive the healing to bring the body back into balance.
- Receive a symbol from your spirit family.
- Give you an insight to your healing gifts and journey.

Spiritual retreat – Altai range, where China, Mongolia and Siberia meet.



Peace and Aloha – Sixth Plane of Existence



By aligning your energy with Peace and Aloha, you are dedicated to your path of spiritual expansion. In using the sixth plane of existence, we are saying to the spiritual masters “We are in control.” However, often when we feel we are in control, this can bring out your shadow side of doubt and fear. Both emotions can prevent you from your true connection to the Christ consciousness or cosmic consciousness. Peace and Aloha are here to steer you through your shadow feelings so you can connect to the pure and constant stream of source light. With a

constant connection to this high form of guidance you will sustain a level of earthly bliss, a fulfilled life, and spiritual enlightenment. Peace and Aloha will always guide you to the right source light for your higher wisdom, with your connection to the other planes of existence and your comprehension that all things are connected; Peace and Aloha will support you through the Laws of existence so you can stay tuned to your inner wisdom and power. Putting aside life drama, other people’s drama, and seeing through the eyes of the Laws will move you from feelings of discomfort to aspects of calmness, groundedness, and peace. The purpose of connecting to Peace and Aloha is to explore and expand your connection to the cosmic highway, always moving and growing in spiritual awareness.

Sixth Plane of Existence

The sixth plane of existence are the Laws; these Laws govern our universe, galaxy, solar system, and us. The Laws filter through every plane of existence, every atom, mineral and proton, thus affecting every component of the world we live in. the phrase *“for every positive action, there is a negative reaction”* shows that balance is the key to the function and purpose of this plane. The Laws are absolute, with the only exception being the Law of compassion, which has the ability to bend many laws. Working as a healer at this level can make you blunt and intolerant of others. To hold the energy of the sixth plane as a healer can be exhausting and use huge amounts of energy. However, those who do will bring forth sacred geometry and sound as part of their healing modalities. Healers who do work at this level are also known as Mystics. However, it is easy to get engrossed with this plane as the Laws are extensive and for some this type of behaviour can lead to the stinting of their own spiritual growth. There are thirty-one Laws that govern the workings of the world and all that reside upon her.

Exercise

For this exercise, you are going to find and integrate sacred geometry or symbols ready for spiritual development and healing with your partner. Take time to focus on your partner and ask for the image of their soul to be revealed to you. Draw this image within the body template. Now extend your focus out into the aura and see any colour, shapes or images waiting for your partner to connect to.

Recognition of the Soul and Sacred Wisdom, Ready for Integration

- Connect to Peace and Aloha.
- Tune into your partner.
- Draw the soul first, followed by the sacred symbols within the aura.

Meditation

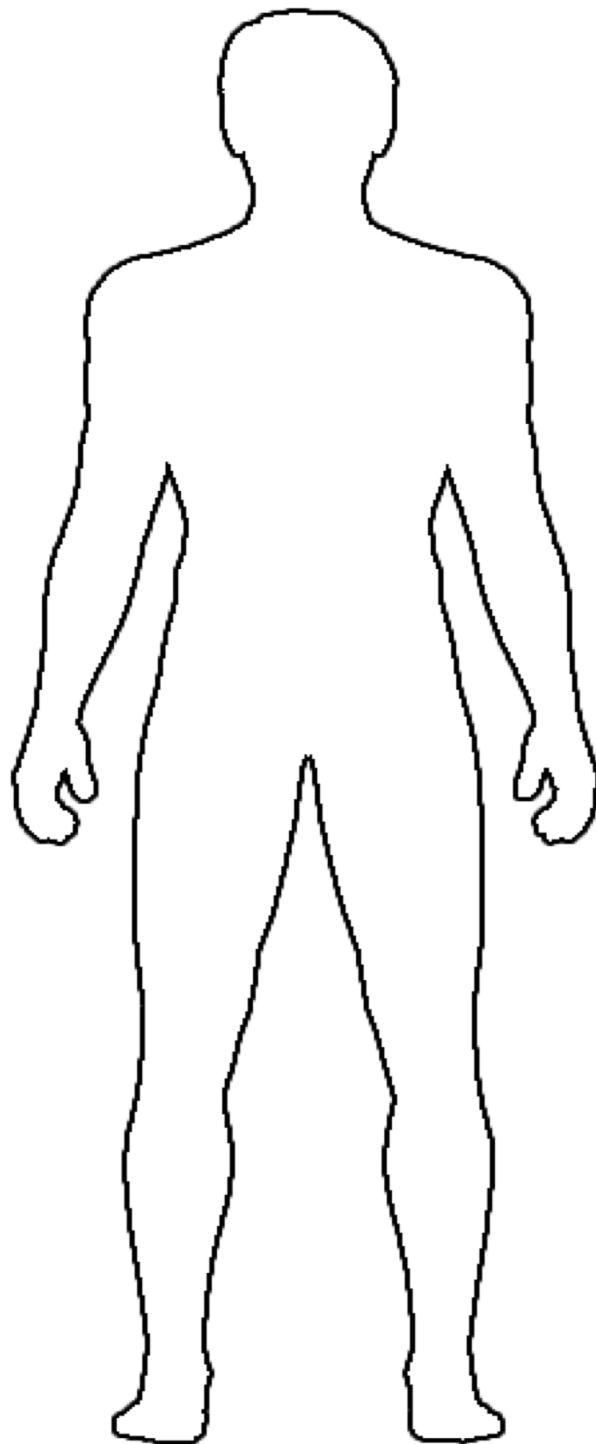
- Receive expansion of the soul image.
- Merge with the sacred symbols waiting within the aura.
- Sacred messages from the Laws and how to use the symbols within the body.

Sacred retreat – Hawaiian Islands.



Exercise Diagram

Scan and tune into your partner to see the sacred image of the soul and any symbols held within the aura ready for integration.



Arcturus and Victoria – Seventh Plane of Existence

Arcturus and Victoria both work on the seventh ray of transformation; purity and freedom. Arcturus is the god of freedom and transmutation. Working with the Ascended Master, St Germain, they have been helping the evolution of the planet by helping us connect to the highest of transformational energy, the Violet Flame. In the 1930's, the consciousness of the planet's vibrations was so high that there was a dispensation given to humanity from the higher spiritual councils, and we, the human race, could access this Violet Flame for our new level of spiritual growth.



Since that time, we have explored the concepts of other worlds, new thinking, the soul, and our journey here upon Earth. Using the Violet Flame, we have transformed our lives away from restriction of formal religious dogma and developed ourselves outside such constraints. Visit Arcturus and Victoria's retreat near Luanda, Angola; the release the violet, purple and pink flames of mercy, forgiveness, transmutation and freedom for the entire planet as a giant fiery pillar. The retreat resembles a fortress with towers like the Tower of London, made of rough purple stone. The council chambers on the inside also have vibrant purples hues. Many angels and elements attend and serve in this retreat. Students are invited to come to this retreat to learn how to use the violet flame to overcome difficult situations on a personal and planetary scale, and to transmute darkness into light.

Seventh Plane of Existence

The seventh plane of existence is the pure energy of creation. It is the plane of "It Just Is". this level of consciousness is the creator of all that is; you can manifest your life in pure love and healing. You are constantly being held within the power of who you are, and as such, you are in control of all that surrounds you. At this level of creation, you are working with pure faith, and trust that what is being asked is done. It is also said that instead of fixing problems, the creator simply changes them. By changing the issues, the person getting the healing can see through the illusion, grasp the issues at hand and take action. Moving through the planes to the seventh level does take time and practice; be patient, and you will find that once you have connected to the energy of the seventh, you will flow there with ease and grace. At this level of consciousness, your thoughts are paramount to

the reality you are living. Everyone's thoughts are a response to what they themselves are projecting out into the world. They are not conscious of these thoughts, but they can control and easily create the thoughts they choose to.

Exercise

Time to look at your thoughts; what are you creating or choosing to believe in? Is it time to create new thought patterns? Who are you projecting to the world? Is it the person you are? Take time to really look at the person you would like to become and see the changes in your belief that will assist in you becoming the new you.

Connecting to the Seventh Plane and Planning the New You

- Connect to Arturus and Victoria.
- Write your list for the new you.
- Feel their guidance.

Meditation

Vianna Stible will take you through all seven planes of existence to manifest at the highest level of consciousness.

- Travel through the seven planes of existence.
- Connect to the Creator of All That Is.
- Manifest the life you want to live.



The Seven Great Beings – Logos of the Great Bear Star Constellation

We are heading out into the universe now, and what is on offer to us as a consciousness and spiritual development opportunity are the Seven Great Beings which are connected to the constellation, the Great Bear of Ursa Major. These great energies are considered the seven great Buddha's or Hindu gods, and are constantly pouring loving energy upon us for our own healing and growth.

The Pleiades



The 'Pleiades' or 'Seven Sisters' constellation lies closest to the Earth.

According to the Ancient Greeks, the Pleiades were seven sisters. In Greek, the word "Pleiades" means "doves". Their parents were Pleione and Atlas, who was condemned by Zeus to support the Heavens on his shoulders. One day, Pleiades were travelling with their mother and met the hunter Orion. Orion fell in love with Pleione and her charming daughters. He spent a great deal of time chasing after them, trying to win their affection. After several years, Zeus intervened and transformed the women into doves to help them escape. They flew into the sky to become the cluster of stars that today has their name.

However, only six stars are visible in the sky without a telescope. The Ancient Greeks explained the absence of a seventh star with several different stories. According to one story, one of the Pleiades, Merope, deserted her sisters because she was ashamed of having a mortal husband, who also happened to be a criminal. Aboriginal mythology has a very similar story of the youngest sister being chased by a lustful being due to her great beauty. Her older sisters constantly changed their shape to protect her and keep her safe from harm, until eventually they trapped the lustful pursuer and escaped the cave structure, leaving him behind. On a conscious level, the two sisters ensoul the planet and send a protection light upon the Earth. This light is linked to the Gods and streams down through the Elohim as they support humanity.

The Seven Sisters, and Seeing the Shape Shifters in Life

In my meditation with the Seven Sisters, I was told that they can help clear our vision and reveal to us the illusions we are living through. Their message to me was:

Dear sisters of light and love,

We see your gifts and skills – know that you have succeeded in seeing the magic of the shape shifter – know this skill and use it wisely.

We will sponsor you gifts for they are needed right now – many shape shifters are walking upon the Earth – they need to be spotted and recognised for what they are.

The two ravens who guard this place are our eyes and ears, just as your kite is for you.

We sent him to you for your vision is far reaching – global. You need this magic to see through the veils.

The Phoenix is our eyes giving rebirth to those who seek it.

Exercise

Take time to look at your situation now. What is it that need to be revealed to you now so you can make good decisions or take action? Ask for the seed/root of the situation so you can really heal the situation. Using last month's class, rather than fix it, ask how you can change it!

Connection to the Seven Sisters

- Connect to the Seven Sisters.
- Write your list for the new you.
- Feel their guidance.



The Logos of Sirius and Dolphin Energy

"Dolphins may well be carrying information as well as functions critical to the regeneration of life upon our planet." –Buckminster Fuller

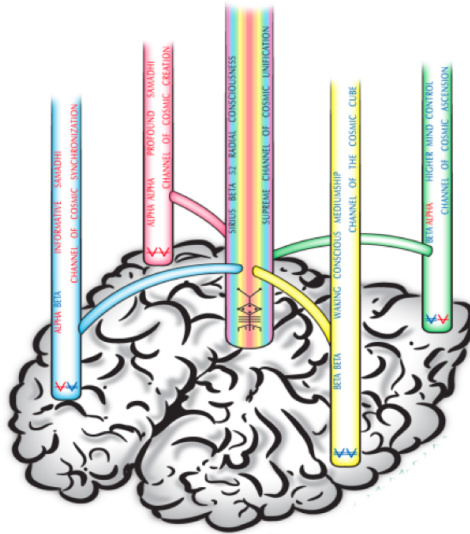


Our solar system is a living organism and is a member of a much larger galactic cosmic hierarchy. The sun, the brain of the solar system, is ultimately controlled by Alcyone, the central sun of the Pleiades which is controlled by an even further, higher central sun: Sirius. The electromagnetic currents of Sirius affect our local solar activity. We know that the sun is about to flip polarity which affects the entire solar system. NASA's site says *"A reversal of the sun's magnetic field is, literally, a big event. The domain of the sun's magnetic influence (also known as the "heliosphere") extends billions of kilometres beyond Pluto. Changes to the field's polarity ripple all the way out to the Voyager probes, on the doorstep of interstellar space."*

Sirius is known as the sun behind the sun that affects our own sun. It transmits energy to our solar system through electromagnetic lines of force. This emanates the different rays and councils of hierarchy that govern the motion, forces and movements of the different planets. We now know that with the increased solar activity, all the planets of our solar system are shifting. Dolphins and whales are the transmitters of the New Beam which carries with it the traits of peace, love, synchronicity, and unity consciousness. Dolphins work through the frequency of joy, play and sound vibration. The thirteen moon/twenty-eight-day synchronometer and synchronic order is a Sirian system based on the starting date July twenty-six (new calendar date in the Maya calendar) in accordance of the heliacal rising of Sirius. The Dolphins are holding and transmitting these frequencies of harmony and radial consciousness. Science has discovered that the dolphin's measure "time" with thirteen sets of twenty-eight grooves along their teeth, which are further arranged in a configuration that functions as an antenna for sound and communication. If dolphins are the bridge to the Sirian star system, then the Golden Dolphin is the Sirian Solar intelligence representing the Supreme Light of the incoming Golden Age. The Golden Dolphin is helping to recode the planetary frequencies by channelling in the new vibrational frequency of the New Beam. This new galactic beam is moderated through the sun. the information can only be received through telepathic attunement. The Galactic Maya knew that what we call the telepathic function of the human brain is actually activated by frequencies from the sun.

Exercise

Run the bars of the mind to open to higher consciousness and connect to self-love and appreciation. Through clearing the bars of the mind, we unlock our potential for endless joy and happiness.

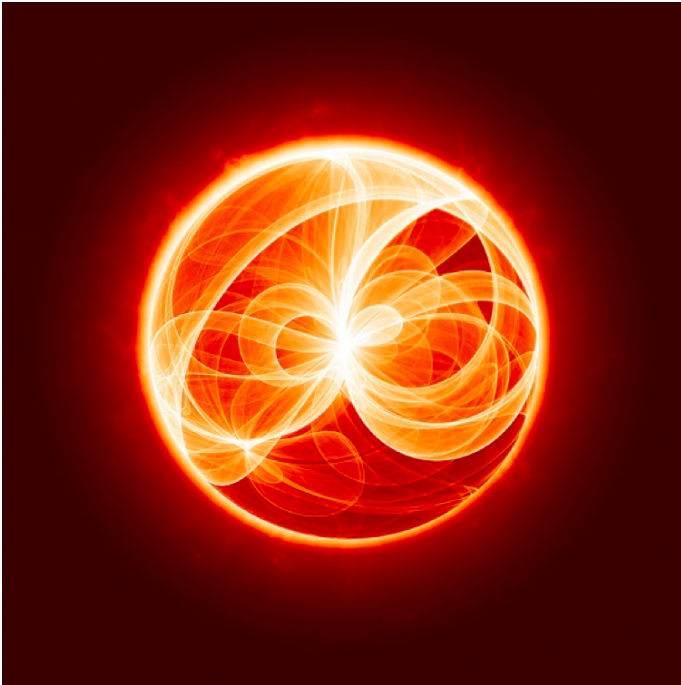


Meditation – Connect to the Golden Dolphin

- Connect to Sirius and the Golden Dolphin energy.
- Clear your block to joy and love.



The Logos of Helios – God of the Sun, The Ultimate Powerhouse



Helios is the Father of the solar system, while his twin flame, Vesta, is the Mother. He is the bringer of life upon the Earth, and we each hold the sacred flame of God's spark within us or the Christ Consciousness within. He is here to oversee the evolution of the human race while supplying the fire that supports us on a daily basis. Vesta is the Goddess Mother, revered in Ancient Rome and Greek times. Vesta is the nurturer of the human race, particularly with Hearth and Home. In Roman times, she was so revered that they set up temples and maidens in her honour, and we know this as the Vestal Virgins.

Helios is the guardian of oaths and gives us the gift of sight, lighting our way on our spiritual journey and lighting the path before us. He is often depicted with a Sun ray crown around his head and on a fiery chariot, crossing the sky at dawn and dusk as the sun rises and sets upon the Earth. Our task is to connect to the sun within us and find our powerhouse, be this the mother aspect of nurture or the father aspect of inner sight.

Exercise

Radiating light from the Sacral Chakra, the powerhouse of the human body.

- Using the Citrine crystal, open the Sacral Chakra to allow the energy of the sun to expand the creative aspects of the body.
- Call upon Helios and Vesta to imbue the body with a symbol of the sun so there is a constant connection to this father and mother of the universe.

Meditation – Connection to Helios and Vesta

Our meditations will take us on a journey to the Sun Temple and connect us to Helios and Vesta to receive a blessing to unlock our inner sun of gift and sight.

Mantra to Helios and Vesta

Helios and Vesta!

Helios and Vesta!

Helios and Vesta!

Let the light flow into my being!

Let the light expand in the centre of my heart!

Let the light expand in the centre of the earth!

And let the earth be transformed into the New Day! [Recite three times]

Salutation to the Sun of God,

O mighty presence of God, I am in and behind the Sun:

I welcome thy light which floods all the earth

Into my life, into my mind,

Into my spirit, into my soul.

Radiate and blaze forth thy light!

Break the bonds of darkness and superstition!

Charge me with the great clearness of thy white fire radiance!

I am thy child, and each and every day I shall become

More of thy manifestation! [Repeat three times]



Lord Vywamus – Human Evolution, Pure Alignment with Soul



Vywamus is the higher self of Sanat Kumara; both exist as individual entities to support the human evolution and soul connection. Sanat Kumara is known as the ancient of Days, as he was present before the time of light on Earth. He voluntarily came from Venus to anchor high vibrational energy of the Christ Consciousness until such time as there were sufficient illuminated beings to take over this role. He energetically connected with all beings, adding his light to theirs. Until recently, Sanat Kumara was in charge of the Planet as well as being in overall charge of the Universe. His role was to oversee the evolution of everything on Earth. He has never had a physical body on Earth. Sanat Kumara has

returned to his home planet of Venus. He represents the seven rays on Venus and is also a member of the Great White Brotherhood. He still has an ascension seat in the Gobi Desert as he is still assisting humanity.

Vywamus is the higher self of Sanat Kumara. Sanat Kumara is the Master of Shamballa, also known as The Ancient Days, who en-souled the Earth up until recently. Vywamus is reported to have had thirty-two lives in a physical existence in another galaxy, one of which included being a channel. An expert in communication and channelling Vywamus is specifically focusing the energies of joy, laughter and self-love to aid Earth and humanity in their evolution to higher consciousness. Vywamus is a very high frequency energy bringing profound wisdom on a mass level concerning the relationship between humanity and our planet Earth, and assists in the Ascension Process. He is very much concerned with the Ascension of the planet Earth. Ascension is achieved by increasing the amount of light and the amount of love that your cellular structure can hold. This light and this love is flowing from the source.

Exercise

Opening labyrinth of the mind to receive pure alignment with Higher Self and soul family.

- Call upon Vywamus to step forward to connect to you and your partner.
- Place your hands upon the crown of your partner and see the labyrinth of the mind open to receive healing and expansion.

Mediation

Our meditations will take us on a journey through the Mahatma energy, the great soul. We will experience what it feels like to hold such high vibration and have that pure connection with self and soul family. The Mahatma means 'Great Soul' and will help heal you on many levels.

- Breaking up crystallised thought forms and emotional patterns within your bodies.
- It helps resolve personal problems and to boost your immune system.
- Re-energises your glands, promotes youth, rejuvenates hormone and sexual balance.
- Actively builds up your personal light quota.
- Helps build up your Antakarana bridge.

Mahatma Invocations

"I invite and invoke a deep penetration of the Mahatma energy into my entire energy system so that I can be of greater service to the Earth."

"I now invoke the Mahatma energy to flow through my body and my aura, into the Earth, allowing me to use my life in service to the Divine."



Labyrinth of the Mind – Christ Consciousness

